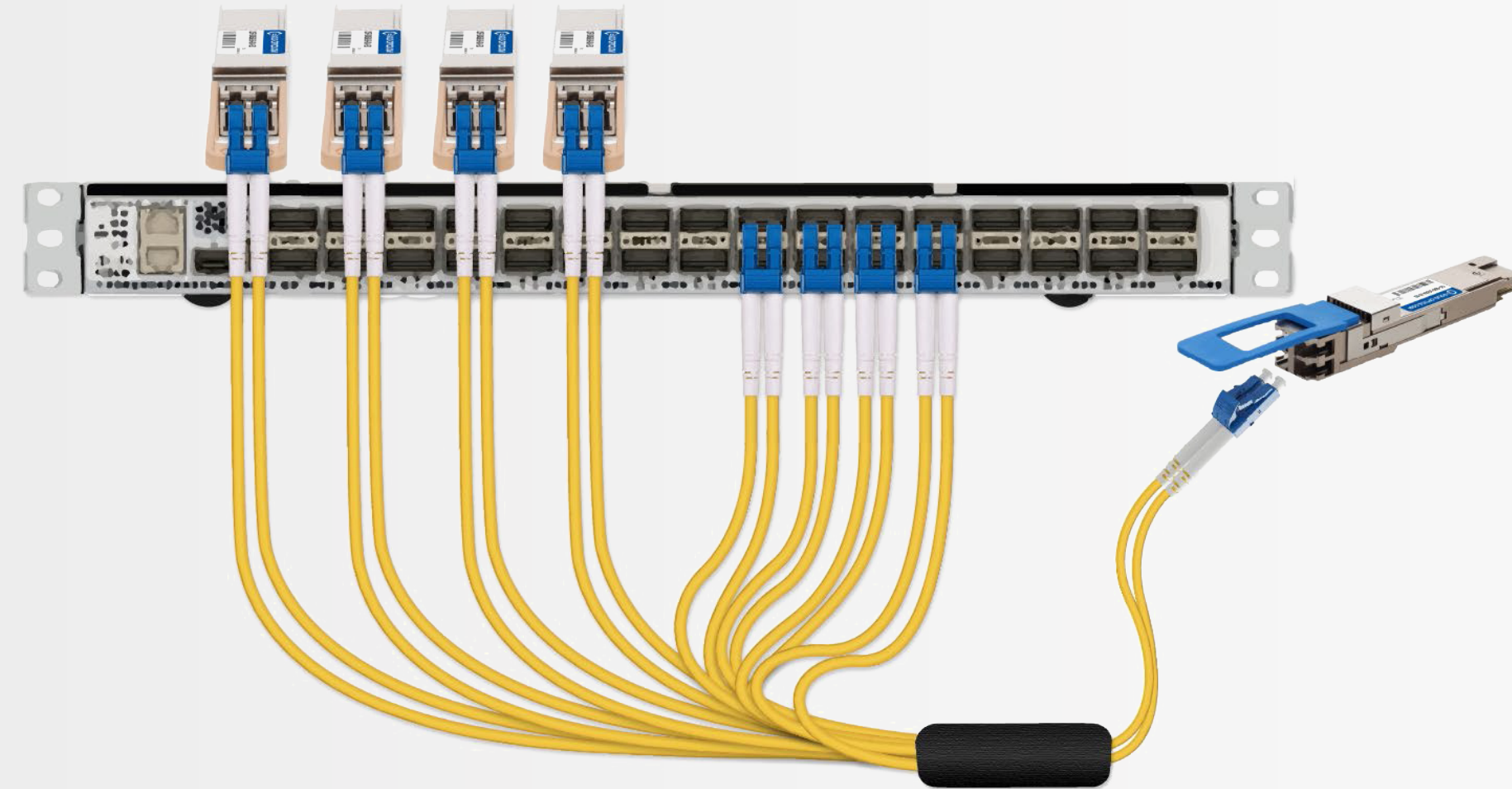


SIMPLIFY 400G DEPLOYMENTS



– Introducing Solid Optics' modular line system





EMBRACE THE NEW ERA OF 400G TRANSPORT AND DATA CENTER INTERCONNECT

- Introducing Solid Optics' modular line system, designed to streamline your DCI deployments.

The advent of 400G ZR and Open ZR+ modules has unlocked the potential of open pluggable DWDM optics, allowing for seamless IP over DWDM and data center interconnect services. Introducing Solid Optics' modular line system, designed to cost-effectively streamline your DCI deployments and transport services. Our fully pluggable solution combines the convenience of pluggable optical amplifiers (available in QSFP Pluggable or QSFP-DD Dual Pluggable form factors) with an easy-to-use 8-channel optical power colorless splitter and LC parking adapter.

The modular line system reduces costs by eliminating the need for an expensive transponders and because each component is pluggable. There is no need to allocate valuable rack space normally associated with line systems and optical transport. The 400G coherent module plugs into a 400G switch or router. The colorless splitter connects up to 8 transceivers to a pluggable EDFA.

The modular line system offers two EDFA options - a QSFP-DD dual EDFA, containing both a pre-amp and boost amplifier in one package. The QSFP option offers a pre-amp and booster pluggable separately for use any QSFP ports to complement many networks use cases. Any unused splitter output ports can be 'parked' in the QSFP LC parking adapter, reserving that port for future services.

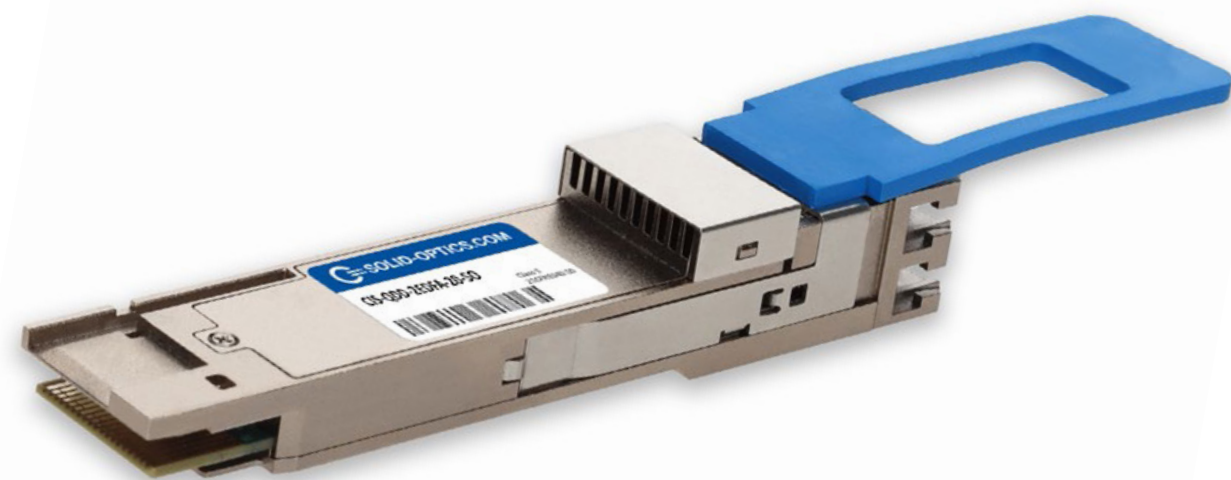
Explore our cutting-edge pluggable modular line system, and experience effortless optimization of your DCI and IP-over-DWDM deployments.



QSFP-DD DUAL PLUGGABLE EDFA

Features & Benefits

- Cost-effective solution that offers amplification for QSFP-DD ZR and Open ZR+
- Only pluggable EDFA that provides LC connectors for both input and output
- Supports up to 8 channels with 120km ZR and Open ZR+ capabilities
- Combines both boost and pre-amp amplifiers in a single pluggable device
- Ideal for lower density point to point deployments



QSFP-DD Dual Pluggable EDFA

QSFP-DD Dual Pluggable EDFA Booster amplifier for DWDM, Duplex LC, Input power -20dBm to 0dBm, Nominal gain +20dB

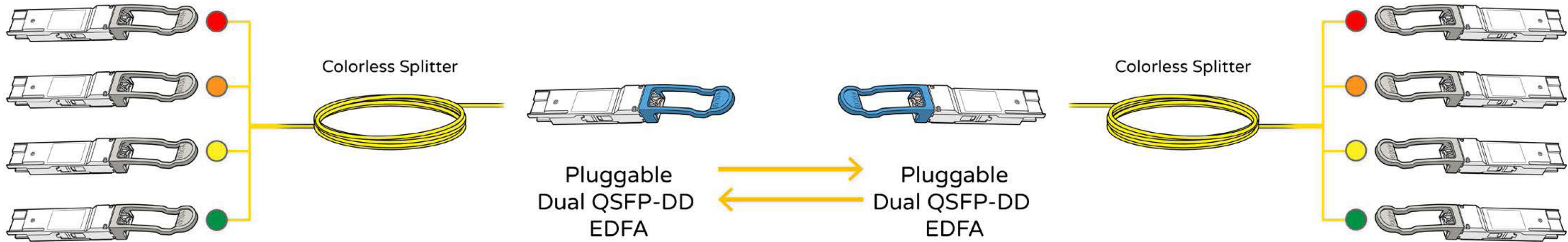
SKU: QDD-2EDFA-20-SO

Cisco® Compatible QSFP-DD Dual Pluggable EDFA Booster amplifier for DWDM, Duplex LC, Input power -20dBm to 0dBm, Nominal gain +20dB

SKU: CIS-QDD-2EDFA-20-SO

Juniper Networks® Compatible QSFP-DD Dual Pluggable EDFA Booster amplifier for DWDM, Duplex LC, Nominal gain +20dB

SKU: JUN-QDD-2EDFA-20-SO





QSFP PLUGGABLE EDFA

Features & Benefits

- Adjustable output power of up to +17dBm
 - Operating temperature range: 0°C to 70°C
 - Compact footprint with open line system functionality
 - Integration into existing ROADMs platforms without the need for additional rack space
 - Embedded gain flattened-filter (GFF)
- and individual boost & pre-amp options over maximum flexibility



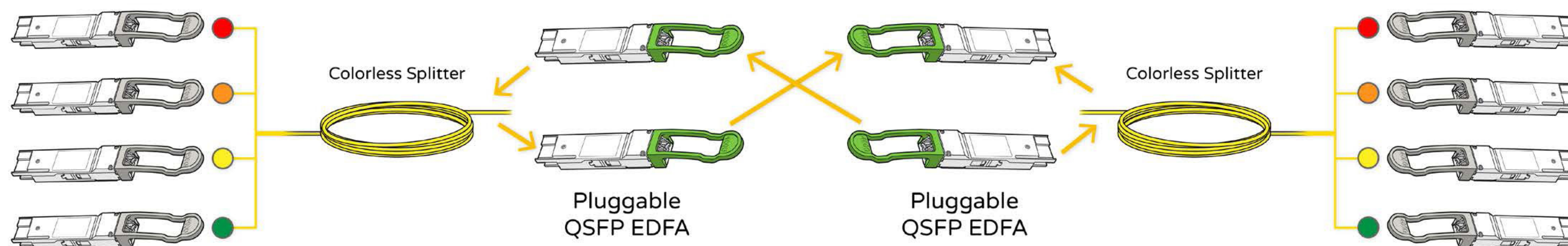
QSFP Pluggable EDFA

QSFP28 Pluggable EDFA QSFP28 Booster amplifier for DWDM, Tx side, duplex LC, Input power -20dbm to 0dbm, Nominal gain 17db

SKU: QSFP28-EDFA-BA-17-SO

QSFP28 Pluggable EDFA QSFP28 preamplifier for DWDM, Tx side, duplex LC, Input power -30dbm to -10dbm, Nominal gain 17db

SKU: QSFP28-EDFA-PA-17-SO





COLORLESS SPLITTER 2 1X8

Features & Benefits

- Supports up to eight channels
- Operating wavelength: 1260nm to 1650nm
- Compact footprint with open line system functionality
- Withstands industrial temperatures of -40°C to 85°C



Colorless Splitter 2 1x8

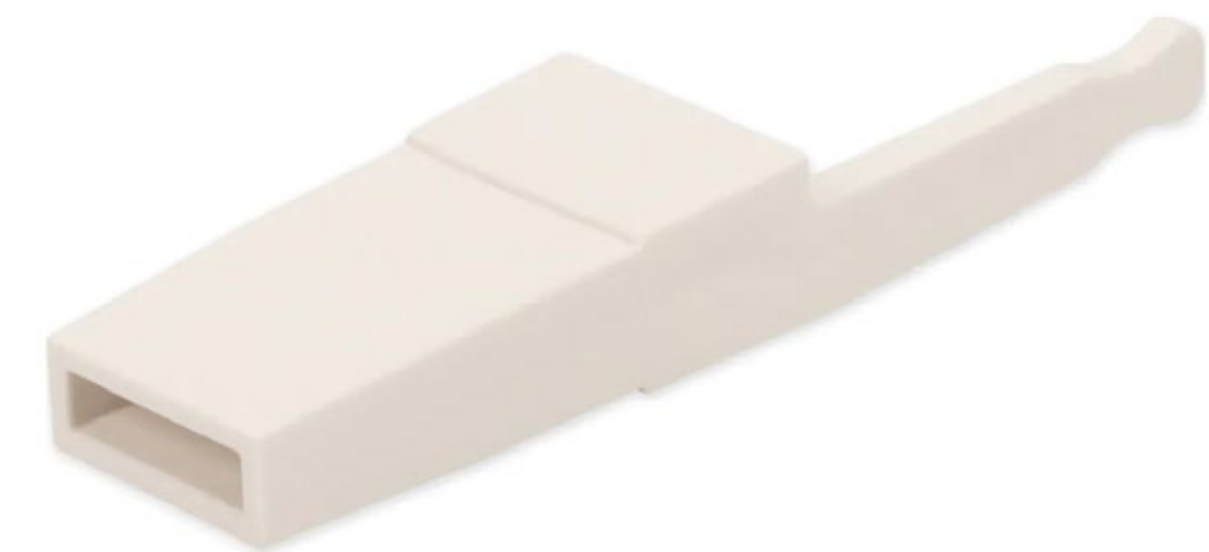
Dual Colorless Splitter, Duplex 1x8 PLC Splitter, Duplex LC connectors, 1M, SMF

SKU: SO-SPLITTER-2x8-12.5

QSFP LC PARKING ADAPTER

Features & Benefits

- Streamlines access for swift turnup of future services
- Facilitates secure and efficient management of loose duplex LC connectors



QSFP LC Parking Adapter

QSFP Parking Adapter, LC or MPO Connector Compatibility Duplex/Simplex w/Dust Covers, 12 Piece

SKU: QSFP-PARK-LC-SO

Get in touch

We hope this guide has provided thorough understanding of streamlining your 400G deployments with Solid Optics' Modular Line System. Should you have any questions or need further assistance, we're just a call or an email away.

Thank you.

Website

www.solid-optics.com

Email

EU Email: info@solid-optics.eu | US Email: infous@solid-optics.com

Phone

EU Phone: +31 (0) 88 342 3776 | US Phone: +1 855 678 4271